



Peppered Sunlight

Designer

Rohan Nicol

Year of Design

2009



Peppered Sunlight is a large pendant light, designed and crafted in Australia. Its distinctive patterned diffuser is available with a variety of designs.

Inspiration for the product was drawn from dappled light that filters through trees. The delicate quality of light that this product provides is achieved through newly available print technologies and rigorous prototyping. It is a sophisticated Australian product for bespoke interiors and is suited to both domestic and commercial applications.

Made in Australia

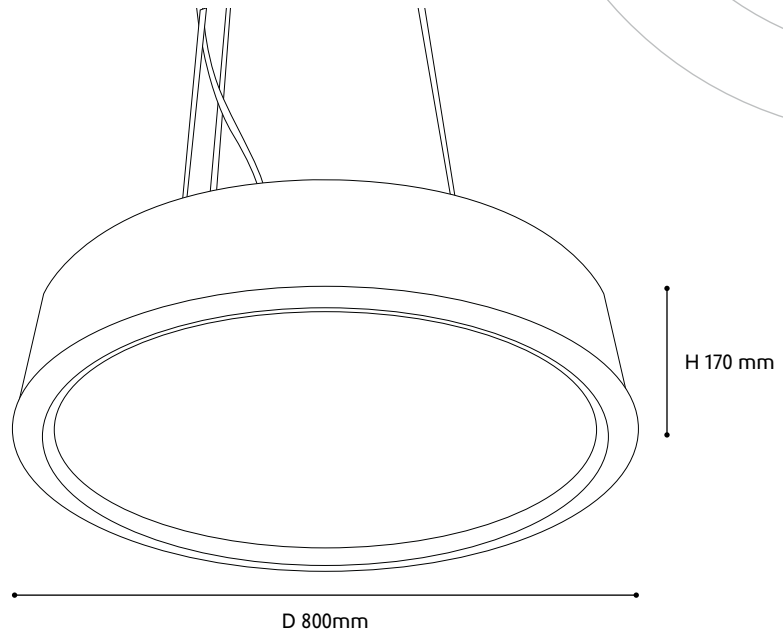
Peppered Sunlight

Material

Finish opal and textured black
ABS plastic
Vacuum formed ABS plastic
diffuser and body
Stainless steel suspension wire
Nickel plated fasteners

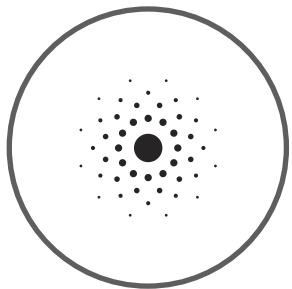
Colour

Opalescent and black

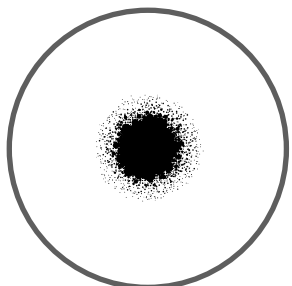


www.lucelux.com

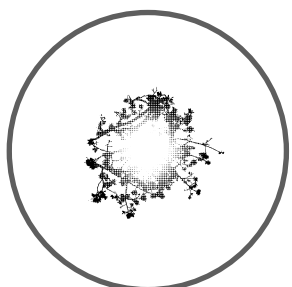
Available Designs



Dots



Splat



Wreath

Detailing

Three point suspension pendant.
Height adjustment via 'griplock'[™] quick adjust system.

Specs

Diameter: 800 mm
Height: 170 mm
Weight: 3.7kgs/8.2 lbs
Suspension wire: max length 1.5 metres
Electrical terminal block included
1 dimmable compact fluorescent globe

Packaging

Length: 900 mm
Width: 900 mm
Height: 270 mm
Volume: 0.22 m³
Weight: 5kgs

IMPORTANT!

When installing or working with the lamp, make sure it is not connected to a power source. This warranty does not cover damage resulting from misuse or abuse, lack of reasonable care, affixing any attachment not provided with the product, alteration of any attachments factory installed, loss of parts or subjecting the fixture to any electrical service other than specified for proper use. Products should not be modified

in any way. Any modification may compromise safety causing the appliance to become dangerous. Lucelux declines all responsibility for products that have been modified. Damages occurring during transit are not covered by this warranty.

Troubleshooting

If the fixture does not work:

1. Turn off electrical power and check all wire connections.
2. Check fuse or circuit breaker and have a qualified electrician replace if necessary.
3. Check to make sure light bulb is in working order.

Limited Warranty

Lucelux warrants against defects in materials or workmanship for a period of one (1) years from date of purchase for use, and agrees to repair or at our option replace a defective unit without charge.

Recommended Maintenance

Dust: Remove with dry microfibre cloth.
Stains: Remove with damp microfibre cloth.